

Guide to International Activities at the UTokyo School of Engineering

Go Global, Engineering Students!

2025



Engineer Your Global Future

Bridging Cultures, Building Dreams through International Exchanges

Message

[From Dean]

Yasuhiro Kato

Dean of the School of Engineering



Welcome to the School of Engineering (SoE) at the University of Tokyo!

If you need information about campus life at SoE, or if you are seeking opportunities for international exchanges, this brochure is for you.

SoE puts great importance on the internationalization of campuses where students can nurture their skills to think and act globally and offers various original international programs and courses. You can choose from a wide variety of on-campus activities or even study abroad for a short or long term. You can

also enjoy interacting with Japanese and fellow international students through these programs. One unique feature of SoE is that we provide original Japanese courses from beginner level to advanced, so that students can learn the language to meet their needs while studying engineering and doing research.

This brochure is the first step toward expanding your possibilities thorough those opportunities at SoE.

If you are thinking of entering SoE, please have a look at what we offer and imagine your future campus life. We look forward to meeting you!

Explore Your Opportunities, Engineer Your Global Career!

Refine your writing and presentation skills in English

(Advanced Academic Writing/Presentation) p.4

Connect with international and Japanese students

(International Lounge, Summer Party, etc.) p.6

Enhance your international experience abroad

(Student Exchange Program) p.7

Focus on major-specific activities

(Courses and programs offered by each department and laboratory)

[From Student]

Fabio Boccamazzo

Doctoral Student, Department of Mechanical Engineering



I decided to study abroad to break out of my comfort zone and immerse myself in an unknown environment, where every encounter could offer opportunities for growth. Motivated by my curiosity about other cultures and the desire to challenge myself, my choice fell on Japan with its rich history and traditions.

Besides my studies in mechanical engineering, I frequently joined cultural exchange events, such as the International Lounge, where I connected with people from all over the world and compared our experiences in Japan. These discussions broadened my perspective and made me discover things previously outside of my own awareness. In addition, I greatly enjoyed hands-on cultural activities, such as calligraphy and traditional tea ceremony, which

deepened my appreciation for Japanese traditions and inspired me to uphold those of my own country.

Of course, studying abroad does not come without its challenges. Adapting to a new country and navigating cultural differences can be difficult. However, it is through overcoming these challenges and finding one's place that personal growth occurs and one gains the confidence to thrive in any new environment. To anyone considering studying abroad: take the leap. Embrace the local culture, step outside your comfort zone, and stay curious. The rewards—new perspectives, skills, and friendships—will be invaluable.



Courses

① Application period ② Date and time ③ Outline ④ URL, QR Code

SoE offers a variety of courses designed to provide international exchange experiences. General credit courses are taught in English, and Japanese language courses are available at levels ranging from beginner to advanced.

*From spring 2026, all courses at SoE will, in principle, be conducted in English.

Advanced Academic Writing

① Course Registration Period ② A1 ③ Lectures and seminars to acquire the skills for research publication, designed for graduate students ④ <https://global-eng.t.u-tokyo.ac.jp/course/awap>



Advanced Academic Presentation

① Course Registration Period ② A2 ③ This course enhances English oral presentation skills through small-group exercises led by native-speaker instructors. Open only to students who have completed (Advanced) Academic Writing. ④ <https://global-eng.t.u-tokyo.ac.jp/course/awap>



(Special) International Collaborative Practice/Workshop

① Course Registration Period ② Depends on the course ③ In order to develop global human resources, the courses will incorporate various hands-on activities such as discussions with students overseas, project-based learning exercises, and activities using a living lab. The courses will be held in various formats to promote collaboration with universities and institutions overseas (online, on-site, intensive, etc). ④ <https://global-eng.t.u-tokyo.ac.jp/course/ic/>



The Short Intensive Course Program between UTokyo and SNU (International Collaborators' Special Lecture on Engineering / International Collaborators' Lecture on Engineering) ※¹ / The UTokyo-SNU Remote Lecture Program ※²

① ※¹ See UTAS ※² Course Registration Period ② 1 or 2 courses offered per semester ③ In the Short Intensive Course Program between UTokyo and SNU, lecturers are dispatched between SoE and SNU and offer lectures. The UTokyo-SNU Remote Lecture Program provides lectures to graduate students at both universities using an online meeting system. The topics vary each time. ④ <https://ut-snu.t.u-tokyo.ac.jp>



Visualizing Japan in the Modern World

① Course Registration Period ② A term (Intensive) ③ An experiential course based on MIT's edX materials, where students explore Japanese history through images illustrating Japan's emergence as a modern nation. The lectures and activities will be conducted in English, and the course includes a field trip. ④ <https://global-eng.t.u-tokyo.ac.jp/course/vj.html>



Japanese Language Class

① Course Registration Period ② S1S2, A1A2 ③ JLCSE offers Japanese Language courses in seven levels: Beginning^{1,2}, Intermediate 1, 2, 3 and Advanced 1, 2.

[Beginning] Beginning 1 and 2 have a regular course (2 or 3 classes a week) and an intensive course (4 or 5 classes a week). Beginning 1 also includes the Introductory courses that open in S2 and A2.

[Intermediate] Intermediate 1, 2, and 3 teach different skills: Integral, Speaking, Listening, Reading, and Writing. There are also courses that are designed for the engineering field at each level (Intermediate 1: Technical Reading, Intermediate 2: Technical Term / Kanji, Intermediate 3: Technical Reading). There is also a Japanese Career Bridge Course (Intermediate 3) that provides job placement assistance, as well as a Multicultural Learning Project Course (Intermediate 3 to Advanced 1,2 level students and Japanese students) where international students and Japanese students gain a deeper mutual understanding of their cultures.

[Advanced] Advanced 1 and 2 level teach different skills: Integral, Speaking, Listening, Reading, and Writing.

④ <https://www.jlcse.t.u-tokyo.ac.jp/en/programs-en/>





Extracurricular Activities

① Application period ② Date and time ③ Outline ④ URL, QR Code

A variety of activities are conducted at different times throughout the day, reflecting the high standards of SoE. Students also have the opportunity to engage with Japanese students by participating as English teachers.

Online Language/Cultural Exchange Programs with Overseas Universities

① Beginning of the semesters ② Depends on the program ③ Programs to deepen international understanding through online language exchanges and cultural interactions with students from overseas universities affiliated with SoE (such as MIT, KTH and TUM).

④ <https://global-eng.t.u-tokyo.ac.jp/program/olcep/index.html>



Assistants for Communication in English (ACE) (former ERIC)

① As scheduled ② Mainly Tuesdays and Thursdays 16:00-17:00 ③ Trained international students at UTokyo offer feedback on scientific English papers (e.g., journal articles) and career-related documents, including resumes and study abroad applications. They also provide presentation feedback to help prepare for oral presentations at international conferences.

④ <https://global-eng.t.u-tokyo.ac.jp/program/eric/>



Garden of English

① As scheduled ② As scheduled ③ A free online program where selected international student TAs pair up to conduct private English conversations with one guest or a reserved group. Each session lasts about 15 to 30 minutes and is suitable for beginners to advanced learners.

④ <https://global-eng.t.u-tokyo.ac.jp/program/garden.html>



Career Development for International Professionals Program (CDIP)

① All year ② S1/S2/A1/A2 ③ The program is designed for graduate students to support enhance their career plan with a wide range of Japanese language classes from beginner to advanced level, Career Education, Entrepreneurship and Internship.

④ <https://www.cdips.t.u-tokyo.ac.jp/>





Exchange Events

① Application period ② Date and time ③ Outline ④ URL, QR Code

With over 1,300 international students from more than 60 countries and regions, SoE offers a variety of events to help you transition smoothly into campus life. Take part in these activities and enjoy meaningful exchanges with both international and Japanese students!



International Lounge (IL)

- ① As scheduled ② Every Friday 12:00-13:00 ③ A place for cultural exchange where Japanese students, international students, and faculty members can enjoy casual conversations in English, Japanese, and other languages on various topics, with the support of international and Japanese Language Assistants (LAs). Come and go whenever you like.
④ <https://global-eng.t.u-tokyo.ac.jp/program/il/> <https://www.jlcse.t.u-tokyo.ac.jp/en/activities-en/il-en/>



Summer Party

- ① As scheduled ② Once a year ③ A summer event where international and Japanese students interact. There are booths introducing Japanese culture, such as kendama and origami. Students can also enjoy light refreshments.
④ <https://www.t.u-tokyo.ac.jp/en/event/ev2024-07-05-001>



Tutor

- ① Twice a year (April and October) ② As necessary ③ Tutors support newly arrived international students in the laboratory with daily life, research, and classes ④ Confirm with your laboratory

Japanese Culture Experience by Japanese Language Course

- ① During the semester ② During the semester ③ To help international students deepen their understanding of Japanese society and culture, we offer experiences and workshops such as wearing kimono, tea ceremony, anime voice acting, rakugo, and oshiruko tasting, as well as wearing yukata, calligraphy, and origami.
④ <https://www.jlcse.t.u-tokyo.ac.jp/en/culture-en/>





Study Abroad Programs

① Application period ② Date and time ③ Outline ④ URL, QR Code

SoE actively promotes international exchange. Students can participate in tuition-free exchange programs with more than 50 partner universities across the globe. Short-term programs during academic breaks are also available. Note: Open to students in regular UTokyo courses.

Musha-shugyo [a few weeks to a few months]

- ① April-/August- ② July to December/November to mid March ③ A travel support program for visiting renowned research laboratories abroad. Students arrange their own visits and present their research findings to receive reviews from top experts, aiming to enhance their motivation for future research.
- ④ See the student information portal site. <https://info.t.u-tokyo.ac.jp/index.html>



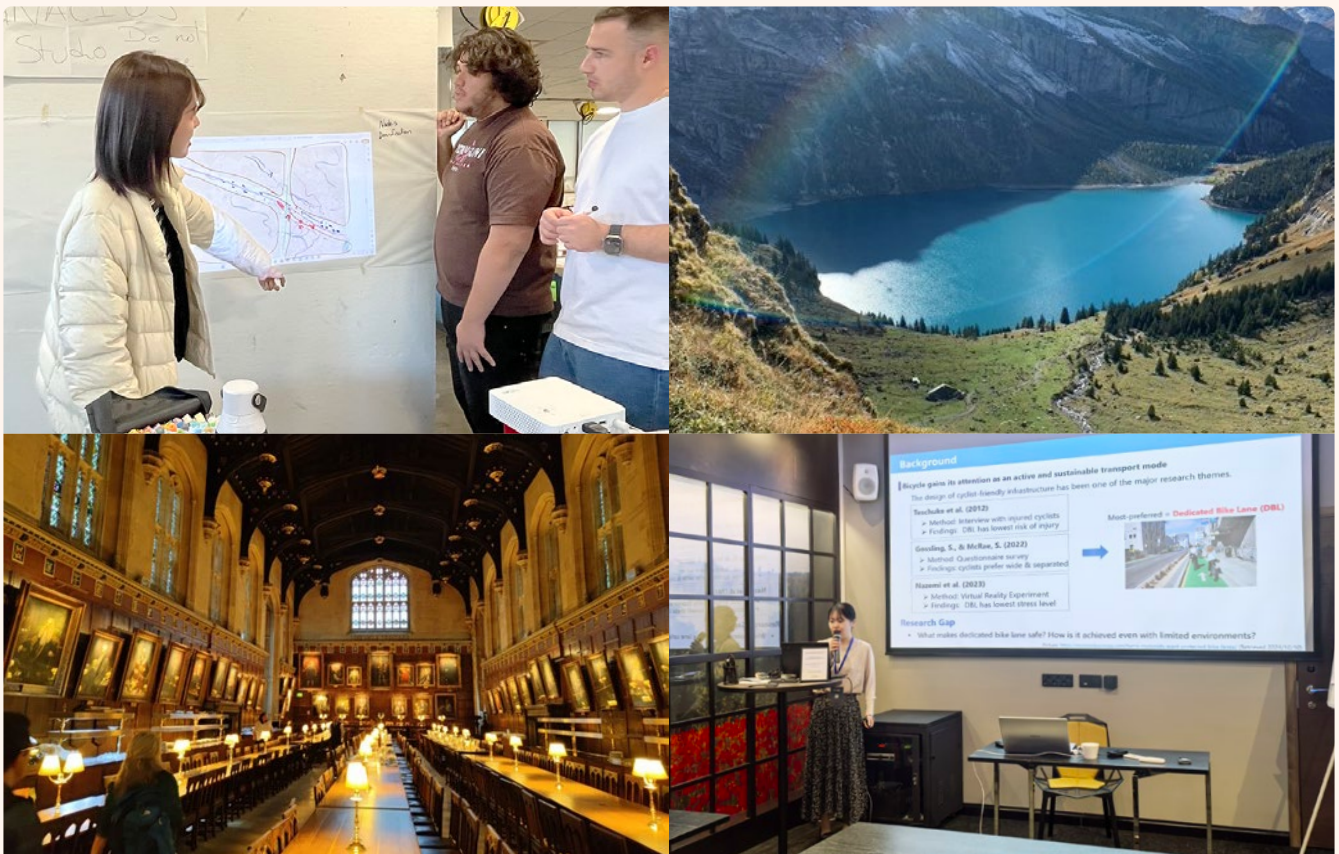
University-wide Student Exchange Program [one semester to one year]

- ① Autumn Application: August-/Spring Application: April- ② Autumn Application: Starting in the following year for one semester to one year Spring Application: from January-February, for one semester to one year ③ A university-wide program for studying abroad for one semester to one year at overseas universities where student exchange agreements are signed
- ④ <https://www.u-tokyo.ac.jp/adm/go-global/ja/program-list-USTEP.html>



Student Exchange Program [SoE] [one semester to one year]

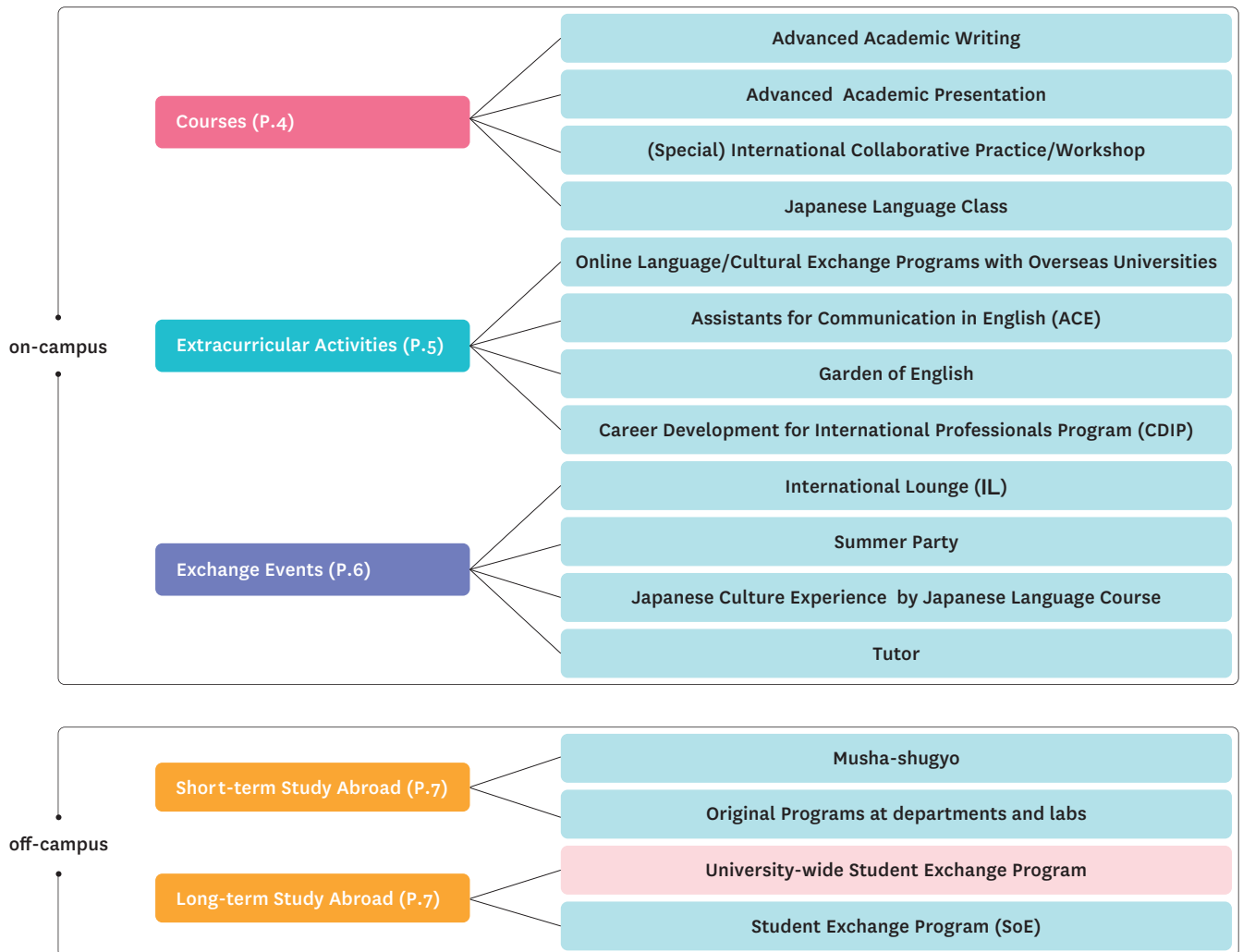
- ① 1-2 months before the application deadline set by the partner university ② From the beginning of each semester
- ③ A program for studying abroad for one semester to one year at overseas universities, mainly engineering universities, with which SoE has student exchange agreements
- ④ https://www.oice.t.u-tokyo.ac.jp/exchange/to_partners.html



Program List & Timeline

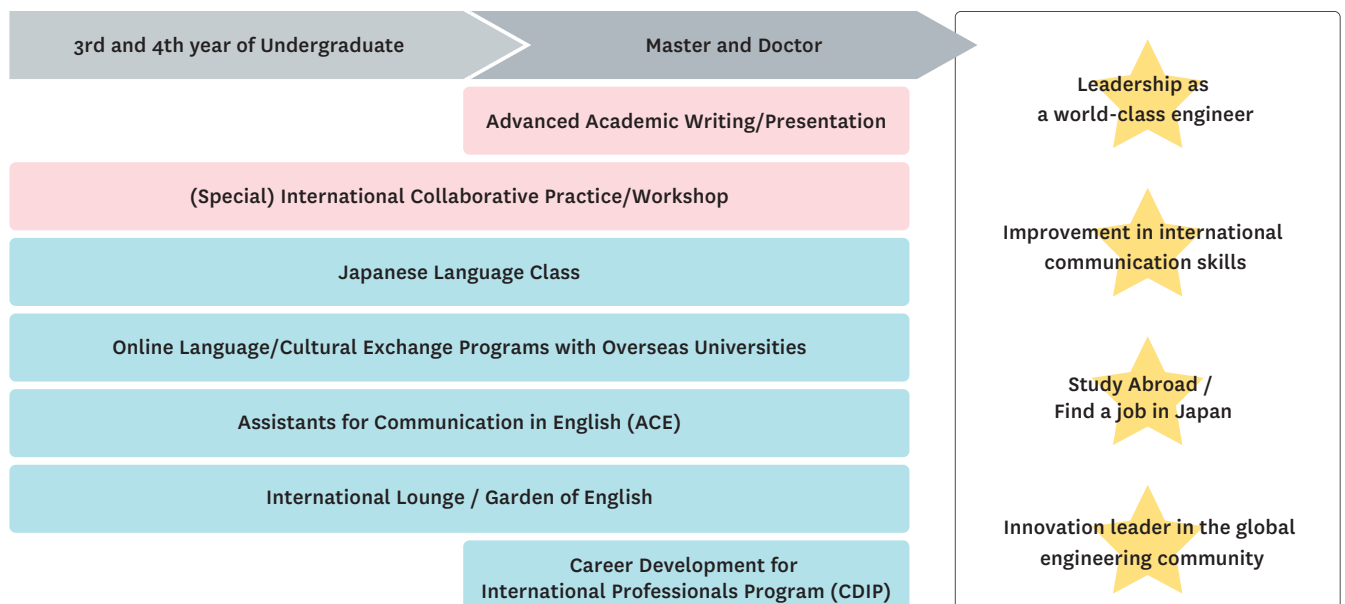
► International Programs

University-wide SoE



► Timeline

Courses Activities



Frequently Asked Questions

Q. I cannot speak Japanese and do not take Japanese Language Class either. Can I join the listed activities?

A. International students at SoE are welcome to participate in the extracurricular activities and events regardless of their level of Japanese. Please do not hesitate to join!

Q. Are there any opportunities to make friends with Japanese students?

A. Japanese students also participate some of the listed courses and activities, especially, International Lounge (IL) is a place for casual interaction.

Q. I would like to find a job in Japan. How can I find information and what is the preferred level of Japanese?

A. See CDIP on the extracurricular programs page if you are a graduate student. Generally, among the courses of the Japanese Language Class, Intermediate 3 or above is preferred. The course "Japanese Career bridge" is focusing on acquiring the knowledge and business skills necessary to understand Japanese organizations and get a job.

Student Consultation

Consultation and advice in multiple languages is available if you encounter problems in everyday life.

English

International Student Support Room (ISSR), Center for Global Education (Globe)

<https://www.u-tokyo.ac.jp/adm/inbound/en/support-issr.html>

Japanese

Student Counseling Room, School of Engineering

<https://sites.google.com/g.ecc.u-tokyo.ac.jp/advisingroom-eng/>

